



同濟大學
TONGJI UNIVERSITY

Tri-Green Project

同济大学 Tongji University

The history of Tongji University can be traced back to 1907 when Tongji German Medical School was founded by Erich Paulun, a German doctor in Shanghai. The name Tongji suggests cooperating by riding the same boat.

PARTICIPANTES:

PhD Candidate

Miss. ZENG Linhui

Master Candidate

Mr. CACERES Alejandro



TONGJI GREEN CAMPUS

■ Site Map ■ Contact us ■ Chinese

Thrift is **Quality.**
Thrift is Virtue, Responsibility, Wisdom ■



Universities and Sustainable Development

International
Sustainable
Campus
Network
(ISCN)

China Green
University
Network
(CGUN)



- ❶ Students' Bathhouse
- ❷ Artificial wet land
- ❸ XuRi Building
- ❹ Tongji Synthetic Building
- ❺ Natatorium
- ❻ Tongji Hall
- ❼ French Center
- ❽ Campus Lawn
- ❾ WenYuan Building
- ❿ Renovation of Laboratory Building



On Campus Projects

Tongji University is now working towards an environment-friendly, resource-efficient and sustainable campus. Our university has built up a series of demonstration projects.

Projects

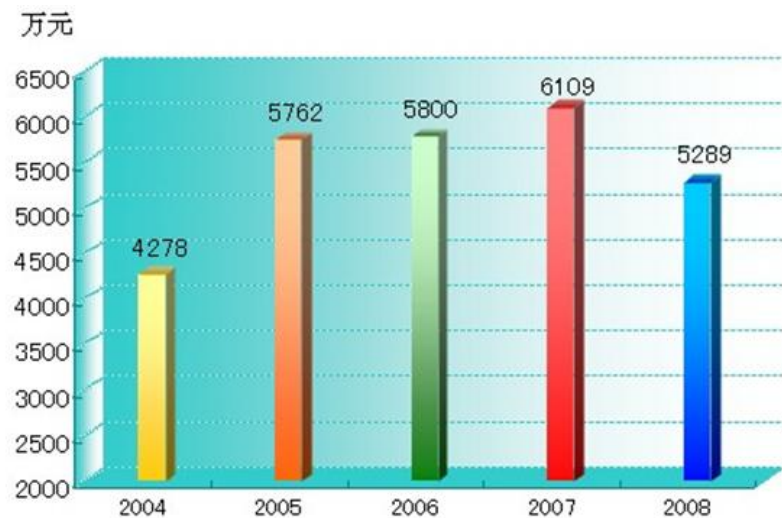
- ❑ Solar thermal energy application for student bathhouse
- ❑ Artificial wet land demonstrate project
- ❑ Energy Efficiency Refit for Existing Building Project – XuRi Building
- ❑ Energy Efficiency Gymnasium – Natatorium
- ❑ Renovation of Laboratory Building
- ❑ Energy efficiency in lighting of Campus Lawn



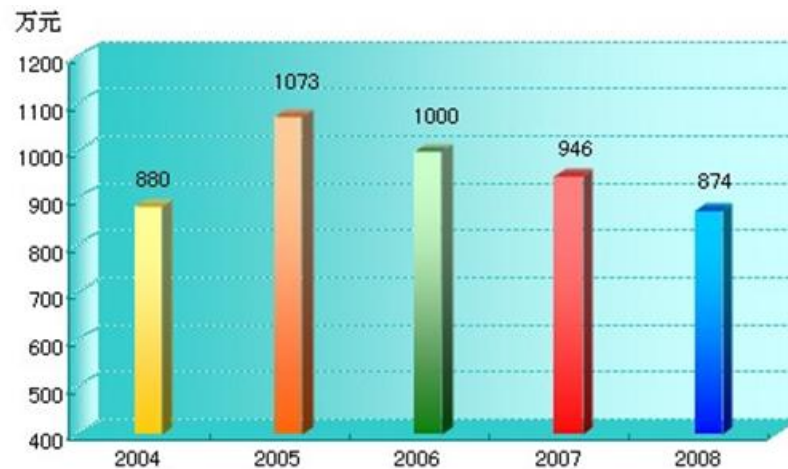
同
济
大
学

Results

Energy Budget 2004-2008



Water Budget 2004-2008



Tri-Green

From a Greening our campus to Greening the
minds of all the students

Tri-Green

Disseminate the knowledge of sustainable development (S.D)

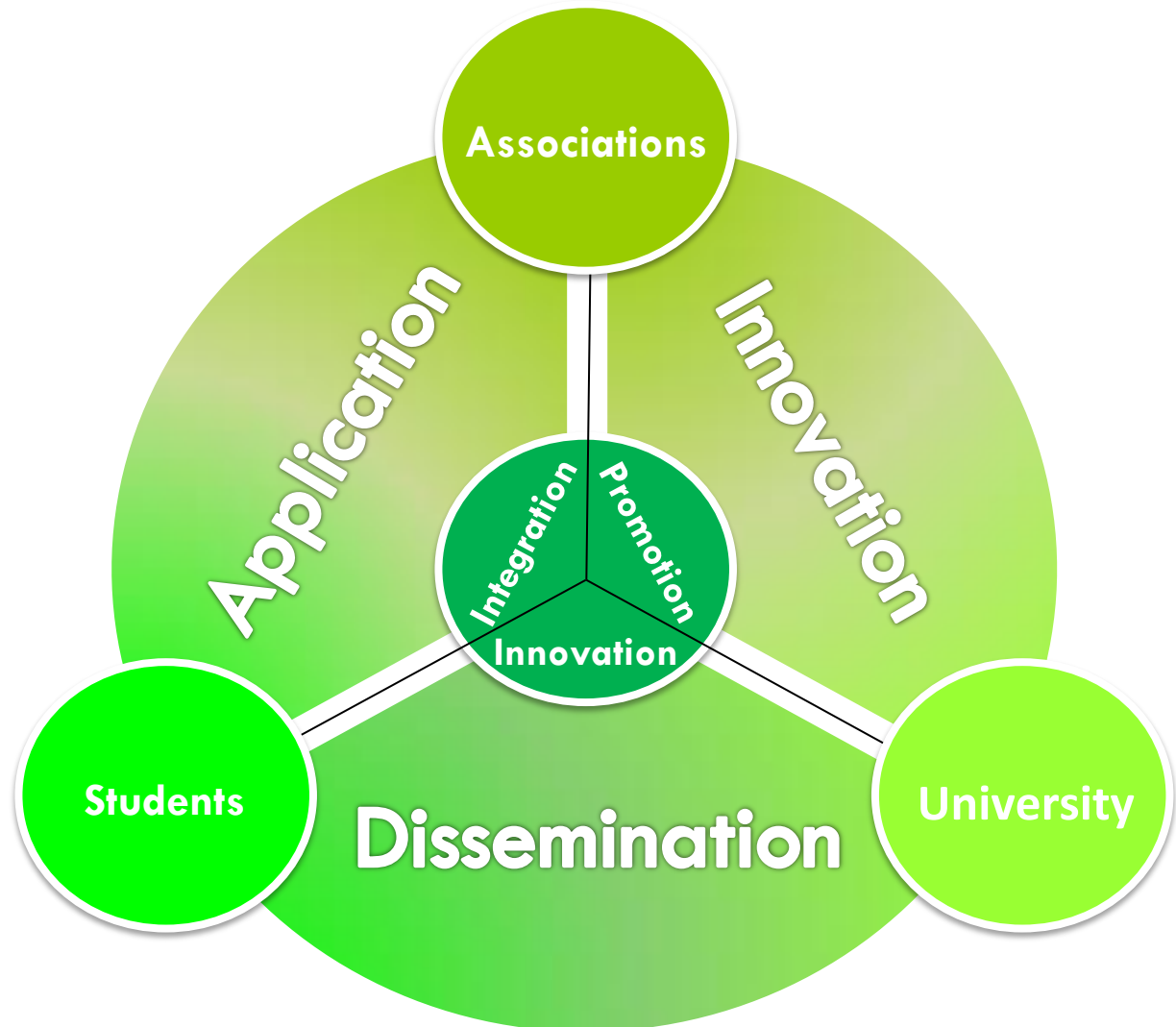
Integrate and implement green ideas into professional and daily life

Promote sustainability in the community and the world



Components of the Tri-Green Project

As a school-wide website we will provide access to basic knowledge, updated activities and on-going projects on campus related to sustainability.



Tools and Framework

Digital Cornerstone



Physical Foundation



Disseminating Knowledge

Provide basic and updated knowledge

Announce, inform and promote related activities

Release a series of video-lectures by UNEP-Tongji IESD as an Open Course



Integrating Application

Organize multidisciplinary activities between students from different colleges.

Offer a platform to discuss students' ideas, share their plans, experiences and achievements



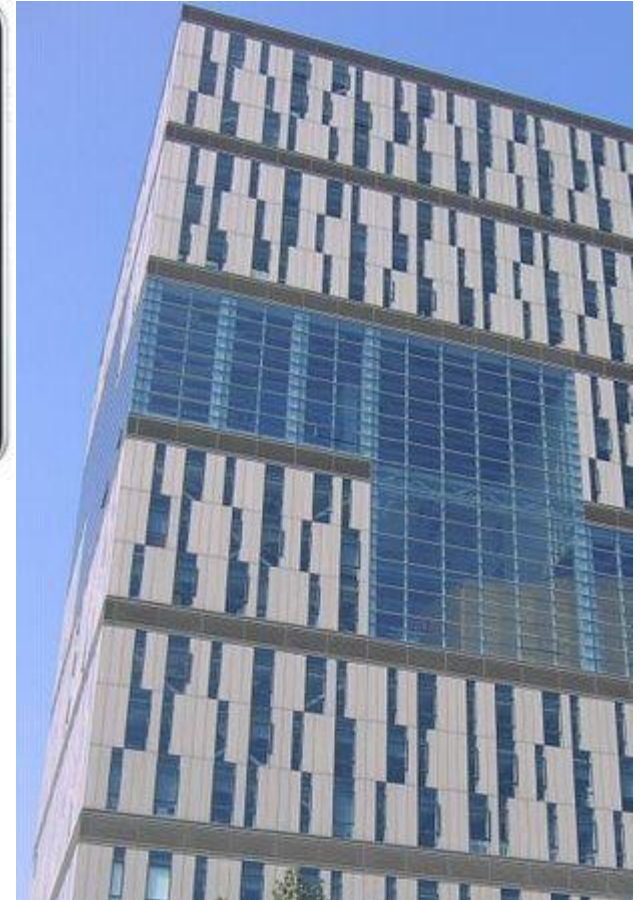
Promoting Innovation

Provide a digital green campus map and online guideline upon admission to encourage a sustainable campus life

Open Energy Account.

Collect and display all the information about student associations online

Replace disposable shoe covers in the laboratories with recyclable ones



Project Guidelines

Measurement

- 1) Volume of visits and website traffic.
- 2) Number of sponsored activities and students assistance.
- 3) Surveys the level of:
 - Knowledge of the initiative
 - Involvement
 - Obstacles
 - Catalyzers
- 4) Scenario analysis and project impact forecast

Schedule





Acknowledgements

Yale University

Fundação Getulio Vargas

University of Massachusetts Boston

Tongji University